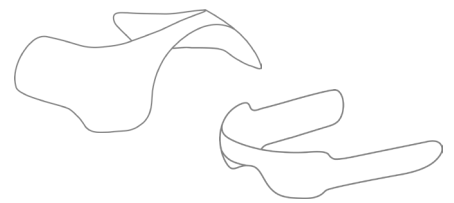


A New Way for Anterior Restoration



Artica™ G8

Anterior Matrix System



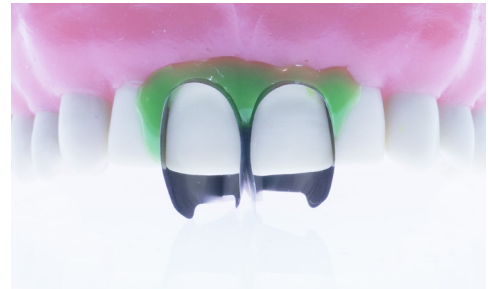
Artica™ G8

Anterior Matrix System

Artica™ anterior matrix system
simultaneously restore proximal and cervical margins

Artica™ G8 anterior matrix system is an outstanding matrix system which is ideal for anterior dental restorations such as class III, IV, V and shape adjustments. The contoured shape of the Artica anterior matrices ensures accurate adaptation to the unique shape of all anterior teeth.

Artica™ G8 anterior matrix system simultaneously restore proximal and cervical margins even in the presence of a rubber dam or gingival retraction cords, effectively reducing restoration time. Furthermore, once the Artica™ matrices are placed, they provide a preview of the final restoration shape, allowing visualization prior to beginning the procedure. It provides excellent predictability.



Standard

- ▶ Ultra-thin (0.035mm) stainless steel for tight contact surfaces
- ▶ Placement wings for ease of positioning
- ▶ Contoured for anatomically correct restorations

Application:

- ▶ maxillary central incisors
- ▶ maxillary lateral incisors
- ▶ canine teeth



Mini

- ▶ Ultra-thin (0.035mm) stainless steel for tight contact surfaces
- ▶ Better cervical adaptation on mandibular incisors and laterals
- ▶ Placement wings for ease of positioning
- ▶ Anatomically contoured for correct restoration with natural anatomies

Application:

- ▶ maxillary and mandibular laterals
- ▶ mandibular central incisors
- ▶ conoid teeth
- ▶ triangular teeth
- ▶ peg laterals
- ▶ teeth with narrow cervical diameter



Tips

Use Flowdam to secure or retain Artica™ G8 matrices in case a wedge risks displacing or deforming the matrix.



*Much preferable

Order information

- M1048 Artica™ G8 Anterior Matrix System Intro Kit
- M1049 Artica™ G8 Anterior Matrices Refill, Mini (12)
- M1050 Artica™ G8 Anterior Matrices Refill, Standard (12)



7-145 Select Avenue,
Toronto, ON, M1V 5M8
Canada

Tel: 1-416-332-2222
orders@marksondental.ca
www.marksondental.ca

The specifications and appearance of the products are subject to change without notice. Printed colour can be slightly different from actual colour. Changes, variations and errors reserved.



(M1048BRCR01)