

Flowdam™

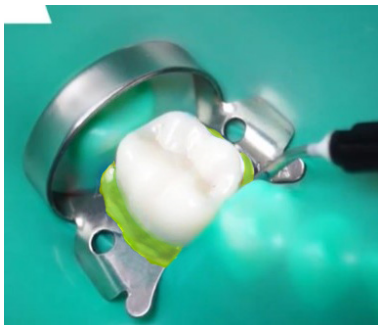
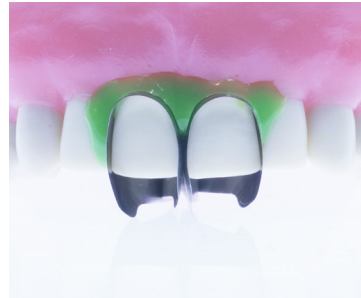
Flowable Dental Dam



Flowdam™

Flowable Dental Dam

Flowdam is light-cured material barrier is a passively adhesive or sealing. Flowdam is specially formulated in green to ensure a safe, unmistakable protection every time. It offers ideal thixotropy, polymerization time, and final hardness to create a perfect shape for restoration matrix system.



Major Application

- ▶ Support anterior matrix system where interdental wedge would risk deforming matrix.
- ▶ Protects soft tissue with impervious seal such whitening and sandblasting procedure
- ▶ Recreate the occlusal anatomy with the stamp technique

Key Feature

- ▶ Fast light cure.
- ▶ Stays cool when cured for patient comfort.
- ▶ Stays where placed and does not run. Remains flexible after curing. Tear resistant. Easy to remove.
- ▶ Stacks on itself smoothly and evenly.
- ▶ Moisture friendly chemistry works well in oral environment.
- ▶ Adheres to models for making bleaching trays.
- ▶ Blocks out undercuts.
- ▶ Repairs tears in rubber dams.



Order information

M1040
M1033

Flowdam™ Flowable Dental Dam, 4 Syringe + 25 Tips
Flowdam™ Syringe Tips Refill, 20 GA, (100)



7-145 Select Avenue,
Toronto, ON, M1V 5M8
Canada

Tel: 1-416-332-2222
orders@marksondental.ca
www.marksondental.ca

The specifications and appearance of the products are subject to change without notice. Printed colour can be slightly different from actual colour. Changes, variations and errors reserved.



(M1040BRCR01)